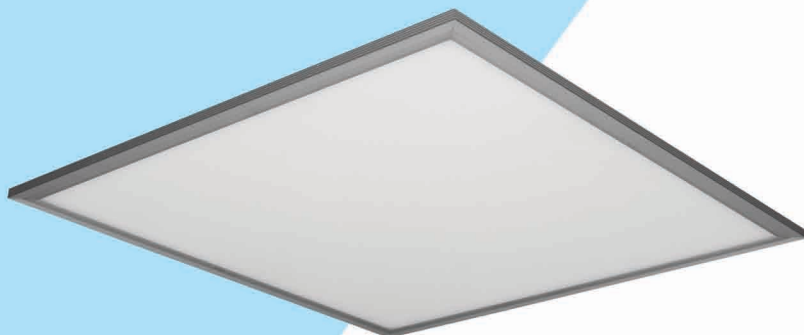
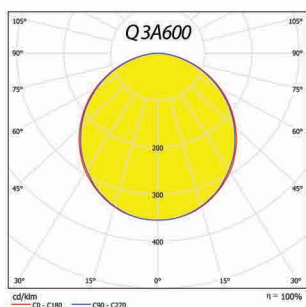
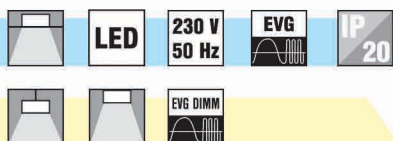


Q

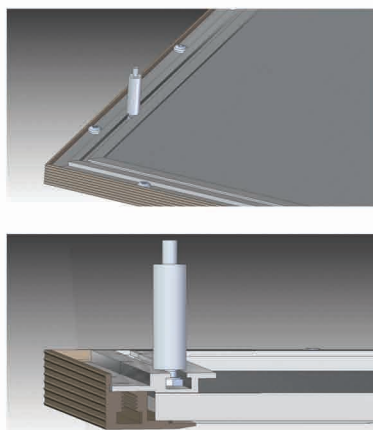
# LED panel



Q3A600



QP5A600



## Body:

Eloxal aluminium frame

## Optic(&):

High translucent acrylic

## Wiring (#):

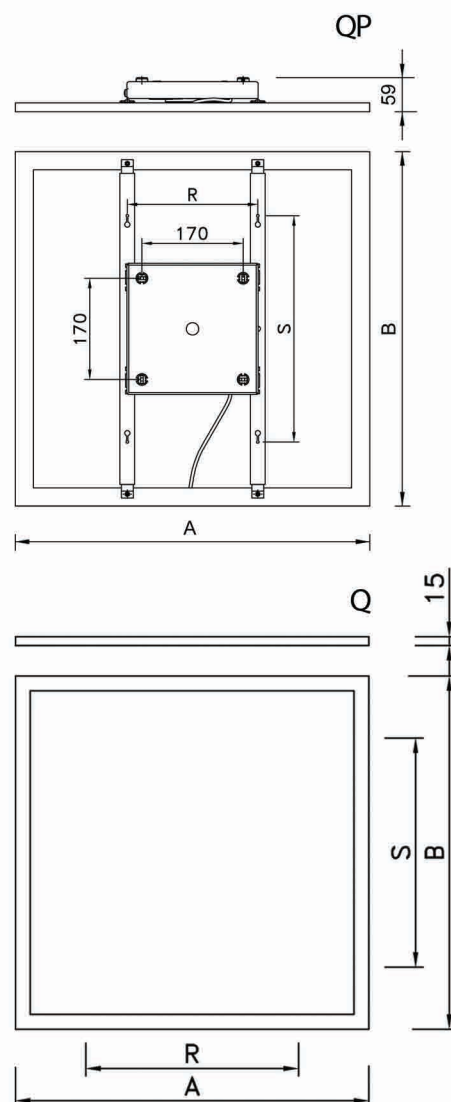
LED OSRAM DURIS E5 + LED driver  
A luminaire can be also equipped with dimmable driver (DALI, 1-10V)

## Q – recessed/pendant luminaire

- Recessed light fitting for installation into false ceiling with visible supporting structure (600x600 or 625x625 modules) or pendant installation with ZHQ22 set
- LED driver is placed out of a luminaire body

## QP – surface installed luminaire

- Surface installation by a holder, distance from a ceiling is 60mm
- LED driver placed inside the holder



Typ	lm	W	ImA	K	A	B	R	S	kg
Q3A600/700	2500	38	700	3000	596	596	558	300	4,5
Q3A600/1050	3600	60	1050	3000	596	596	558	300	4,5
Q3A625/700	2500	38	700	3000	622	622	580	300	4,6
Q3A625/1050	3600	60	1050	3000	622	622	580	300	4,6
Q5A600/700	2500	38	700	5000	596	596	558	300	4,5
Q5A600/1050	3600	60	1050	5000	596	596	558	300	4,5
Q5A625/700	2500	38	700	5000	622	622	580	300	4,6
Q5A625/1050	3600	60	1050	5000	622	622	580	300	4,6
Q3B600/350	1300	20	350	3000	596	296	558	200	2,8
Q3B600/700	2200	40	700	3000	596	296	558	200	2,8
QP3A600/700	2500	38	700	3000	596	596	220	380	5,4
QP3A600/1050	3600	60	1050	3000	596	596	220	380	5,4
QP5A600/700	2500	38	700	5000	596	596	220	380	5,4
QP5A600/1050	3600	60	1050	5000	596	596	220	380	5,4